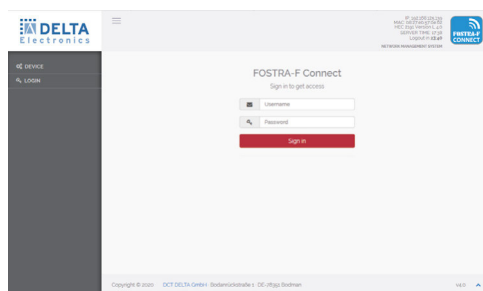


DELTANET OVERVIEW - DELTA'S SMART REMOTE CONTROL SOLUTION

- || DELTANET - the smart solution for automated data collection and creation of a topographical overview of installed network components
Remote access to FTTx and HFC components via DCT DELTA's FOSTRA-F solution. On-site configuration of DCT DELTA components via WiFi access.
- || DELTANET is based on the three applications DELTANET FOSTRA-F, DELTANET SCANAPP and DELTA CONFIGAPP, which can be used independently or in interaction with each other
 - || DELTANET FOSTRA-F: The simple and cost-effective solution for remote access, e.g. for ingress control (supported features depend on the device) with minimal energy consumption and no additional user bandwidth consumption
 - || DELTANET SCANAPP: The app (available for Android and iOS) supports during network commissioning - Register the nodes/amplifiers by scanning appropriate QR codes and get a database based topology overview of your network. Integrated tools assist the installer in avoiding mismatches. SCANAPP also supports on-site configuration via the installer's mobile device due to the integrated CONFIGAPP feature, e.g. configurations can be uploaded and downloaded to the smartphone and thus stored on the centralized DELTANET server. Uploadable recordings / photos of the installed components and configuration complete the data collection, which represents a further source of information, especially for maintenance/service tasks.
 - || DELTANET CONFIGAPP: The app (available for Android, iOS and Windows) allows to configure (via Wi-Fi) Delta Nodes/Amplifiers using a mobile device or Windows laptop. The FOSTRA-C module acts as wireless access point, inserted temporarily in the corresponding slot of the node/amplifier. Thus onsite the service staff can use the app to download and modify a configuration of connected devices. CONFIGAPP is available as a standalone version and also embedded in SCANAPP.

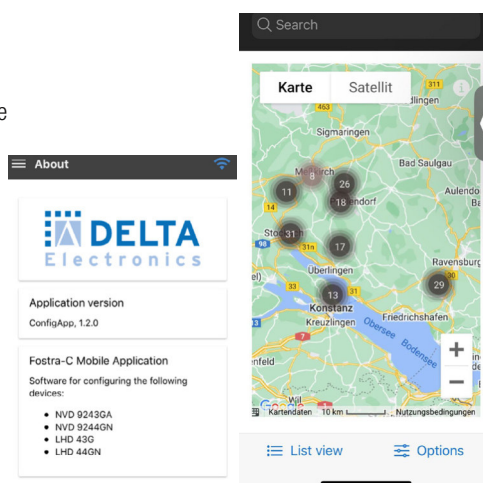
DELTANET FOSTRA-F

- || Robust remote access to configuration parameters of RFoG/HFC nodes/amplifiers
- || Access does not allocate user bandwidth
- || Efficient troubleshooting, e.g. in the event of ingress, by attenuating / switching off the return channel (as well in interaction with a higher-level management system)
- || Linux based database
- || Access via web GUI (http(s)), REST API, SNMP
- || Cost-efficient, license model allows low-cost entry



DELTANET SCANAPP

- || Client/server system. No direct dependency on server installation location, as long as there is a permanent internet connection
- || Mobile app installed on the service team's smartphones/tablets (Android or iOS). Database synchronization via the Internet
- || Simple node/amplifier registration by scanning the QR code, labeled on the devices
- || One QR code per node/amplifier, one QR code per FOSTRA-F module (if installed)
- || Integrated connection test between HEC and FOSTRA-F module (if installed)
- || Automatic inventory and location detection using GPS
- || Map or table based view of installed components
- || Uploading of photos of the on site installation or other documents (e.g. acceptance report)
- || Highlighted link from selected device towards the head end
- || Smart device based on site configuration via the CONFIGAPP feature. Device access realized via Wi-Fi hot spot (FOSTRA-C module)
- || Import/export of the node/amplifier configuration via installer's smart device



DELTANET CONFIGAPP

- || Installed on the mobile device (Android or iOS) or Windows laptop of the service staff
- || FOSTRA-C module is temporarily plugged into corresponding slot, detected and connected via Wi-Fi to the mobile device/laptop
- || Configuration of the device via the app, including import /export from/to the mobile device/laptop
- || Available as Standalone version and integrated in DELTANET SCANAPP

DELTANET FOSTRA-F



Database on HEC or dedicated database server

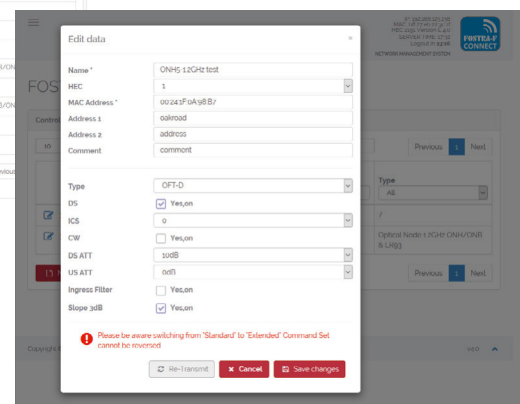
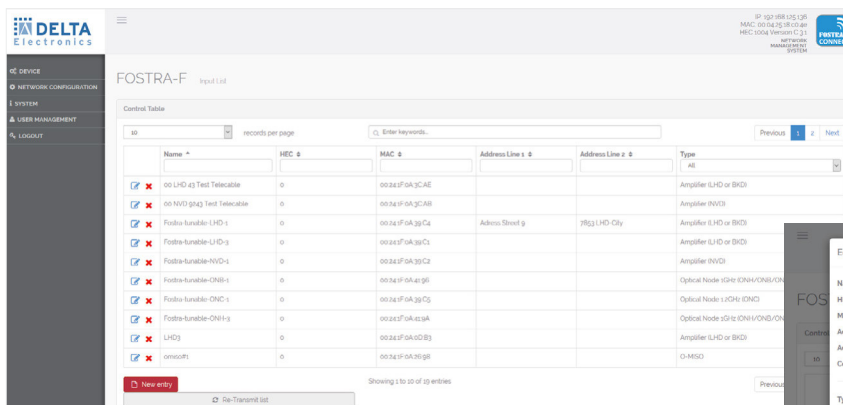


Node/Amplifier with FOSTRA-F module



Prerequisites - All you need is ...

- || DELTANET FOSTRA-F requires a platform operating the FOSTRA-F database. This might be the Headend Controller (HEC, recommended for accessing up to 500 FOSTRA-F modules) or a centralized server / VM (provided by the customer)
- || Access to device-specific information of the nodes/amplifiers, such as name, address and type.
- || Access to device-dependent parameters such as DS on/off, burst mode on/off, ECO mode on/off, DS/US path settings (for ingress management)
- || Modular license scheme, initially remote control of at least 32 FOSTRA-F modules, expandable in a stepwidth of 500. Certainly customizable on request.
- || The HEC acts as an FSK based transmitter addressing the FOSTRA-F receiver modules in the nodes/amplifiers

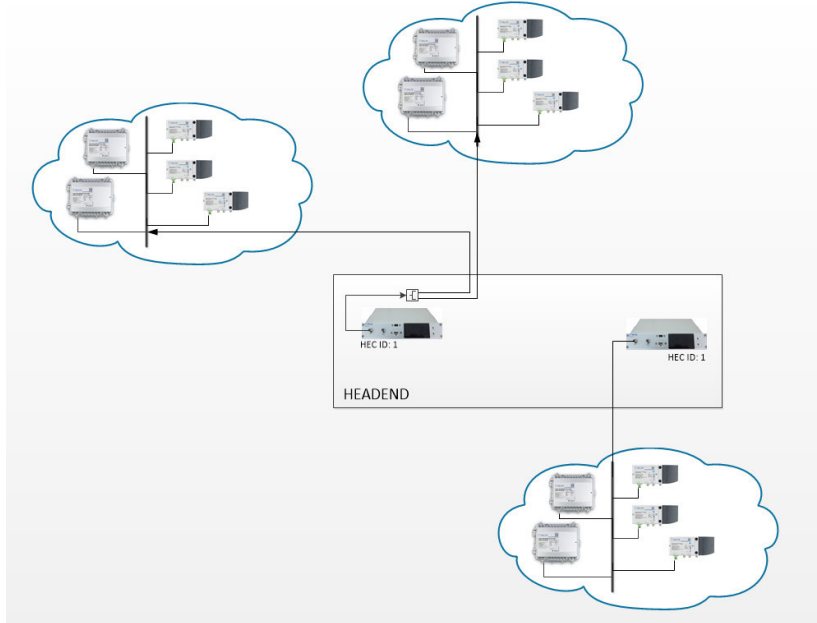


DELTANET FOSTRA-F DESIGN RECOMMENDATION

Standalone approach

Recommended for

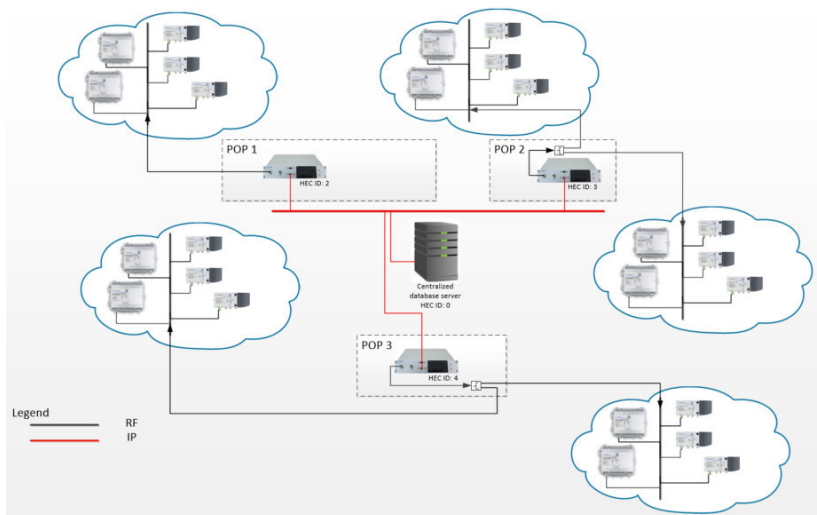
- Smaller sized networks (for up to 500 FOSTRA-F modules/HEC): HEC in standalone mode
- Database runs on HEC and HEC acts as RF single controller to attached FOSTRA-F modules



Centralized Server approach

Recommended for

- Medium / big sized networks: Centralized server for multiple HECs which hosts the database.
- HEC acts as RF gateway only



HEC3191 - HEAD END CONTROLLER FOR DELTANET FOISTRA-F



Cost-effective remote control system for HFC/RFoG nodes/amps

- || FOISTRA-F protocol implementation based on EN 60728-14
- || Compact FSK-transmitter as desktop unit, mounting kit for 1RU 19" installation included
- || Variable transmit frequency ranges in 3 specific ranges from 860.5..879.5 MHz
- || Web based GUI, running locally or centralized, Linux operated
- || 1 RF output (selectable on front or rear panel) with RF test point (-20dB)
- || Electronic level adjustment of output signal
- || 100 Base-T RJ-45 connection, USB-port for serial connection
- || Standard HEC includes basic test license for 32 FOISTRA-F modules (subscribers), expandable in steps off 500 additional FOISTRA-F modules
- || Prepared for bidirectional communication with the FOISTRA-F module (requires FOISTRA-F V3.0)



FOISTRA-F Microreceiver for Fibre Nodes and Amplifiers

- || Remote control functions: DS ON/OFF, Burst Mode ON/OFF, Ingress Detection Switch 0/6/45 dB, Eco Mode on/off, OMI adjustment upstream/downstream path settings *
- || Easy integration into smartphone application DELTANET SCANAPP
- || FSK-based, robust, no return path necessary
- || FSK signal can be configured between two SC-QAM carrier
-> no additional bandwidth consumption or other frequency block allocation.



* whole functionality depending on amp/node type

| Type | HEC 3191 | FOISTRA-F |
|-----------------------|---|---|
| Application | DELTANET | ONH, ONB, BKD, LHD, NVD types |
| Item No. | Item number see page 9 bottom | Item number see page 9 bottom |
| TX-frequency | MHz 860.5-879.5 MHz (other frequencies on request) | 862 / 868.3 / 870 MHz, each with a ± 300 kHz capture range (other frequencies on request) |
| Monitoring-Status LED | green (=Tx ON) | green: indicated current ICS settings, received command, locked / not locked to HEC |
| Bandwidth | kHz 120 | 120 |
| Spurious | dB μ V < 10 | < 10 |
| Distortion | dB > 66 | - |
| Dynamic-Input level | dB μ V - | 30...75 |
| Transmitting level | dB μ V 1 x 69 ... 100 (set by software) | - |
| RF test point | 1 x -20 dB | - |
| Data Speed | Bps 4800 | 4800 |
| Local interface | 100 Base-T RJ-45 and USB (as serial port) | RS-232 (only for debugging) |
| Power supply | V~/W 200 - 240 AC / 5 DCV (1A) / < 5 | 6-24V / < 0.4W@24V / < 0.18W@12V |
| Dimensions | mm 220 x 140 x 1RU (chassis only) 19" x 140 x 1RU (with mounting frame) | 25 x 24 x 8 |
| Weight | kg < 1.0 | 0.02 |
| IP protection class | IP 20, Indoor | |

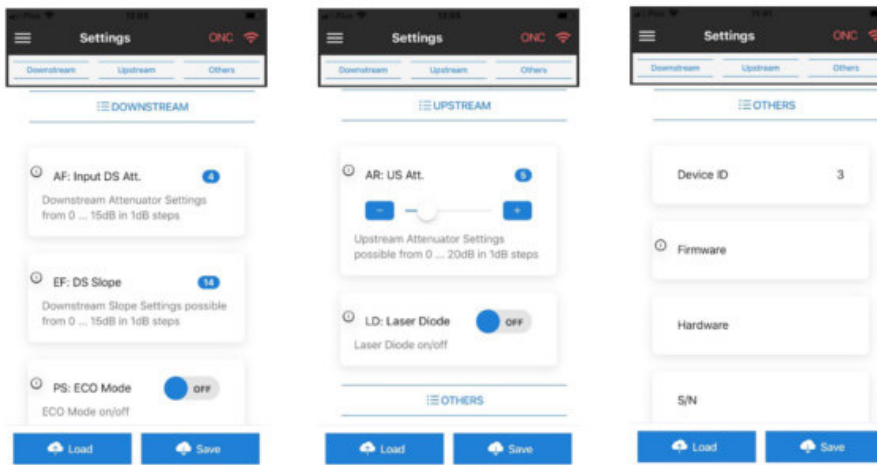
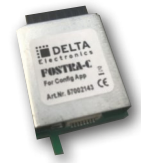
DELTANET SCANAPP

- DELTANET SCANAPP consists of a server-based application (e.g. access via web GUI) and an app, installed on the installer's smart device (supports Android and iOS.)
- Collection of relevant device data (e.g. device type, technical data, serial number, device configuration), positioning data, time of installation, installer's ID, photo(s) of installation.
- Integrated check routines, such as check for duplicated port or return path wavelengths entries, cross connection test to the assigned FOISTRA-F database.
- Automatic synchronization with the central database, resulting in real time updates of the virtual network topology.

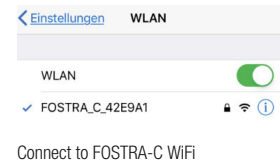


DELTANET CONFIG APP

- || CONFIGAPP enables device configuration export/import via installer's smart device.
- || Connection to the device via a Wi-Fi hotspot (FOSTRA-C module)
- || Access to all parameters that can be set via the push button menu, such as
 - || Downstream and upstream relevant parameters
 - || Device-specific settings, such as eco mode on/off, burst mode on/off
- || Display of hardware and firmware version of connected device



Application menu



DELTANET PRODUCT OVERVIEW

| Type | Item No. | Description |
|---------------------------------|----------|--|
| HEC 3191 | 57004308 | Head End Controller incl. basic 32 user license |
| DELTANET license extension +500 | 57005352 | Upgrade license, to manage additional 500 FOSTRA-F modules |
| FOSTRA F V2.5 Tuneable HOR | 57004320 | For a horizontal mount FSK Receiver 861.7-862.3 MHz / 868.0-868.6 MHz / 869.7-870.3 MHz |
| FOSTRA F V2.5 Tuneable VER | 57004321 | For a vertical mount FSK Receiver 861.7-862.3 MHz / 868.0-868.6 MHz / 869.7-870.3 MHz |
| FOSTRA C * VER | 57002143 | WiFi Config Module for FOSTRA-F Connect |
| DELTA SCANAPP BASIS | 57003559 | SCANAPP Server Software incl. license for 500 subscribers |
| DELTA SCANAPP +500 LIC | 57003560 | SCANAPP license for additional 500 devices |
| DELTA SCANAPP +1000 LIC | 57003590 | SCANAPP license for additional 1000 devices |
| DELTA SCANAPP +5000 LIC | 57003591 | SCANAPP license for additional 5000 devices |
| DELTA SCANAPP ANDROID | 57003561 | SCANAPP Mobile App for Android download free in Google Play Store |
| DELTA SCANAPP IOS | 57003562 | SCANAPP Mobile App for IOS download free in Apple App Store |
| DELTA CONFIGAPP WINDOWS v1 | 57004701 | DELTANET CONFIGAPP for Windows based systems v1 |
| DELTA CONFIGAPP ANDROID v2 | 57004702 | DELTANET CONFIGAPP for Android mobile devices v2 |
| DELTA CONFIGAPP IOS v2 | 57004703 | DELTANET CONFIGAPP for iOS mobile devices v2 |

* FOSTRA C is a service interface for temporary installation and configuration settings and must be removed from the amplifier or optical node for error-free and standard-compliant operation before it is closed.